

***FURCHTLOS***

RIDE YOUR WAY

# FURCHTLOS

## ABOUT FURCHTLOS

FURCHTLOS was founded by a group of motorcycle enthusiasts with a combined 60+ years of experience in the motorcycle and auto industry who share these common beliefs:

*We believe that motorcycle accessories should have the same caliber of design and engineering as the world-class bikes they're being assembled to.*

*We believe that kitting out your bike with accessories should feel like an upgrade and not like a compromise.*

*We believe that riders deserve better...better design, better functionality, and better performance.*

*We believe it's time for a disruption in the motorcycle accessories industry...*

That's why we're pushing the limits of technology and engineering, to bring riders the high quality products that they truly desire.

# RANGER

Aluminum Case Series



reddot winner 2023  
vehicle accessories design

Top Case 50L

10



Aero Aluminum / Anthracite / Cool White

Top Case 50L ADV  
CARBON LID

18



Aero Aluminum / Anthracite / Cool White

Side Case 36L Left

12



Aero Aluminum / Anthracite / Cool White

Side Case 36L Right

13



Aero Aluminum / Anthracite / Cool White

Side Case 31L Left

14



Aero Aluminum / Anthracite / Cool White

Side Case 31L Right

15



Aero Aluminum / Anthracite / Cool White

Side Case 36L Left ADV  
CARBON LID

20



Aero Aluminum / Anthracite / Cool White

Side Case 36L Right ADV  
CARBON LID

21



Aero Aluminum / Anthracite / Cool White

Side Case 31L Left ADV  
CARBON LID

22



Aero Aluminum / Anthracite / Cool White

Side Case 31L Right ADV  
CARBON LID

23



Aero Aluminum / Anthracite / Cool White

Top Case 50L Inner Bag

26



Top Case 50L Inner Bag

Side Case 36L/31L Inner Bag

28



Side Case 36L Inner Bag Side Case 31L Inner Bag

Aluminum Support Plate

44



Anodized Aluminum Black Anodized Aluminum

# SHIELD

Plastic Case Series



reddot winner 2024  
vehicle accessories design

Top Case L Luxe

32



Black/Yellow Black/Silver White/Red

Top Case L

34



Black/Yellow Black/Silver White/Red

Top Case L Color Lid

36



Black White Silver Red

Top Case L Backrest

37



Plastic Support Plate L

45



Top Case S Luxe

38



Black/Yellow Black/Silver White/Red

Top Case S

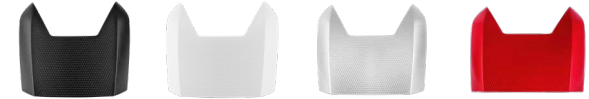
40



Black/Yellow Black/Silver White/Red

Top Case S Color Lid

42



Black White Silver Red

Top Case S Backrest

43



Plastic Support Plate S

45



# EVEREST

Waterproof Bag Series

Side Bag 34+34L 48



Carbon Black / Slate Grey / Arctic White

Duffel Bag 50L 50



Carbon Black / Slate Grey / Arctic White

Roll Bag 36L 52



Carbon Black / Slate Grey / Arctic White

Engine Guard Bag 54



Carbon Black / Slate Grey / Arctic White

Seat Bag 56



Carbon Black / Slate Grey

Backpack 26L 58



Carbon Black / Slate Grey / Arctic White

# LEGACY

Retro Bag Series

Saddlebag 16L/12L 62



Classic Black / Vintage Grey

Tank Bag 8L/5L 64



Classic Black / Vintage Grey

Duffel Bag 32L 66



Classic Black / Vintage Grey

Duffel Bag 46L 68



Classic Black / Vintage Grey

Phone Holder 70



FU05LGP00X101

Accessory Pouch 71



FU05LGAP00X101

Bottle Holder 72



FU05LGBH00X101

Seat Bag Base 73



FU05LGUB00X101

# RANGER

8



# EVEREST

46



# SHIELD

30



# LEGACY

60





reddot winner 2023  
vehicle accessories design

# RANGGER

## RANGER

The Red Dot Winner 2023 in Vehicle Accessories Design, the FURCHTLOS RANGER aluminum cases take advantage of cutting-edge hybrid case technology combining aircraft-grade aluminum with high strength polymers to offer superior lightweight performance in a sleek, rivetless structure.

With technical features such as a high security lock, robust self-blocking hinge, double limit strips, watertight sealing system, and a self-insulated structure that dampens noise and vibrations, the RANGER cases set a whole new standard for functionality, so you can enjoy the ultimate riding experience.

# RANGER

## RANGER TOP CASE 50L



reddot winner 2023



Aero Aluminum  
FU01TCXX005000



Anthracite  
FU01TCXX005001



Cool White  
FU01TCXX005002



Double limit strips & reinforced hinge



Integrated backrest X2



Cast aluminum handles

### TECH SPECS



DIM: 45 × 40 × 34cm



VOLUME 50L



FITS 1 MODULAR HELMET



CAST ALUMINUM HANDLES



INTEGRATED BACKREST X2



SECURITY LOCK



MAX LOAD 10KG

# RANGER

## RANGER SIDE CASE 36L LEFT



reddot winner 2023



**Aero Aluminum**  
FU01SCCL003600

**Anthracite**  
FU01SCCL003601

**Cool White**  
FU01SCCL003602

### TECH SPECS



DIM: 49.5 × 23 × 36.5cm



VOLUME 36L



CAST ALUMINUM HANDLES



SECURITY LOCK



MAX LOAD 10KG

# RANGER

## RANGER SIDE CASE 36L RIGHT



reddot winner 2023



**Aero Aluminum**  
FU01SCCR003600

**Anthracite**  
FU01SCCR003601

**Cool White**  
FU01SCCR003602

### TECH SPECS



DIM: 49.5 × 23 × 36.5cm



VOLUME 36L



CAST ALUMINUM HANDLES



SECURITY LOCK



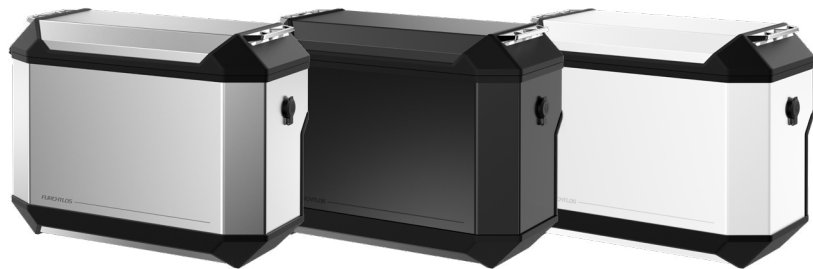
MAX LOAD 10KG

# RANGER

## RANGER SIDE CASE 31L LEFT



reddot winner 2023



**Aero Aluminum**  
FU01SCTL003100

**Anthracite**  
FU01SCTL003101

**Cool White**  
FU01SCTL003102

### TECH SPECS



DIM: 49.5 × 23 × 36.5cm

**31L**

VOLUME 31L



CAST ALUMINUM HANDLES



SECURITY LOCK



MAX LOAD 10KG

# RANGER

## RANGER SIDE CASE 31L RIGHT



reddot winner 2023



**Aero Aluminum**  
FU01SCTR003100

**Anthracite**  
FU01SCTR003101

**Cool White**  
FU01SCTR003102

### TECH SPECS



DIM: 49.5 × 23 × 36.5cm

**31L**

VOLUME 31L



CAST ALUMINUM HANDLES



SECURITY LOCK



MAX LOAD 10KG





reddot winner 2023  
vehicle accessories design

# RANGER ADV

For extreme riders who want maximum functionality and performance from their luggage system, the RANGER ADV line has all the same technical features of the RANGER cases, but with some additional enhancements that are geared toward adventure riding.

The traditional aluminum lid is replaced by a chopped carbon version for enhanced lightweight performance, ultra strong hypalon strips provide additional tie-down points for attaching objects to the top of the case, and 3M reflective details ensure you're always visible to others both on and off the road.

With RANGER ADV, you're ready to bring your adventure to the extreme.

# RANGER

## RANGER TOP CASE 50L ADV



reddot winner 2023



Aero Aluminum  
FU08TCXX005000



Anthracite  
FU08TCXX005001



Cool White  
FU08TCXX005002



Real chopped carbon fiber lid



Cast aluminum handles



High strength hypalon strips

### TECH SPECS



DIM: 45 × 40 × 34cm



VOLUME 50L



FITS 1 MODULAR HELMET



CAST ALUMINUM HANDLES



INTEGRATED BACKREST X2



SECURITY LOCK



MAX LOAD 10KG

# RANGER

## RANGER SIDE CASE 36L LEFT ADV



reddot winner 2023



**Aero Aluminum**  
FU08SCCL003600

**Anthracite**  
FU08SCCL003601

**Cool White**  
FU08SCCL003602

### TECH SPECS



DIM: 49.5 × 23 × 36.5cm

**36L**

VOLUME 36L



CAST ALUMINUM HANDLES



SECURITY LOCK



MAX LOAD 10KG

# RANGER

## RANGER SIDE CASE 36L RIGHT ADV



reddot winner 2023



**Aero Aluminum**  
FU08SCCR003600

**Anthracite**  
FU08SCCR003601

**Cool White**  
FU08SCCR003602

### TECH SPECS



DIM: 49.5 × 23 × 36.5cm

**36L**

VOLUME 36L



CAST ALUMINUM HANDLES



SECURITY LOCK



MAX LOAD 10KG

# RANGER

## RANGER SIDE CASE 31L LEFT ADV



reddot winner 2023



**Aero Aluminum**  
FU08CTL003100

**Anthracite**  
FU08CTL003101

**Cool White**  
FU08CTL003102

### TECH SPECS



DIM: 49.5 × 23 × 36.5cm

**31L**

VOLUME 31L



CAST ALUMINUM HANDLES



SECURITY LOCK



MAX LOAD 10KG

# RANGER

## RANGER SIDE CASE 31L RIGHT ADV



reddot winner 2023



**Aero Aluminum**  
FU08CTR003100

**Anthracite**  
FU08CTR003101

**Cool White**  
FU08CTR003102

### TECH SPECS



DIM: 49.5 × 23 × 36.5cm

**31L**

VOLUME 31L



CAST ALUMINUM HANDLES



SECURITY LOCK



MAX LOAD 10KG



# RANGER

## RANGER INNER BAGS

With 4 great functions packed into 1, the RANGER Inner Bags bring a whole new level of versatility to your aluminum case storage system.

Snap the bag to the inside of your RANGER case to use it as an inner lining and have easy access to your items while traveling.

Roll the bag closed when you want to have IPX6 waterproof protection.

Use the fixation straps included to secure the bag to the top of the case or the rear of the motorcycle when you need additional storage capacity.

Then use the shoulder strap to carry your belongings with you once you reach your destination.

# RANGER

## RANGER TOP CASE 50L INNER BAG



Top Case 50L Inner Bag  
FU07TCIB005000



Extra cargo function



Inner lining function



IPX6 waterproof inner bag function

### TECH SPECS



DIM: 38 × 32 × 32cm



IPX6 WATERPROOF



REFLECTIVE DESIGN



SHOULDER STRAP



CAN BE USED AS SEAT BAG

# RANGER

## RANGER SIDE CASE 36L/31L INNER BAG



Side Case 36L Inner Bag  
FU07SCIB003600



Side Case 31L Inner Bag  
FU07SCIB003100



Extra cargo function



Inner lining function



IPX6 waterproof inner bag function

### TECH SPECS



DIM: 40 × 22 × 34cm



IPX6 WATERPROOF



REFLECTIVE DESIGN



SHOULDER STRAP



CAN BE USED AS SEAT BAG



**reddot** winner 2024  
vehicle accessories design

# SHIELD SHIELD

Red Dot Winner 2024 in Vehicle Accessories Design, the FURCHTLOS SHIELD line brings together high strength materials and advanced manufacturing technologies to offer the highest level of protection for your belongings without influencing the weight of your bike.

Beneath its sleek exterior shell, SHIELD contains a number of advanced engineering features that work to optimize both performance and appearance. The patented high security lock and fixation mechanisms have been meticulously integrated into the case structure to optimize internal storage capacity and achieve a clean "buttonless" exterior appearance. Hidden hinges and soft-touch comfort backrests maximize comfort for the rear passenger. And high-end finishings like two-tone parametric engravings give the product a luxury feeling.

With many different color choices and optional accessories such as comfort backrests and color lids, the SHIELD cases can be personalized to fit any riding style.



# SHIELD


## SHIELD TOP CASE L LUXE



reddot winner 2024

\*Color lid and backrest included



 Black/Yellow  
FU11TCUP000L16



 Black/Silver  
FU11TCUP000L14



 White/Red  
FU11TCUP000L25



Removable soft lining in base and lid



Double density foam backrest X2



Premium engraved color lid

### TECH SPECS



DIM: 60 × 48 × 32cm



48L

VOLUME 48L



FITS 2 FULL HELMETS



SECURITY LOCK



MAX LOAD 10KG

# SHIELD

## SHIELD TOP CASE L



reddot winner 2024

\*Color lid and backrest sold separately



 Black/Yellow  
FU11TCXX000L16



 Black/Silver  
FU11TCXX000L14



 White/Red  
FU11TCXX000L25



Removable soft lining in base



Integrated hidden hinge for smooth rear surface



Fits 2 full helmets

### TECH SPECS



DIM: 60 × 48 × 32cm



VOLUME 48L



FITS 2 FULL HELMETS



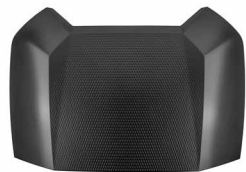
SECURITY LOCK



MAX LOAD 10KG

# SHIELD

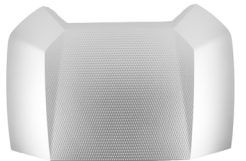
## SHIELD TOP CASE L COLOR LID



**Black**  
FU11TCXX410001



**White**  
FU11TCXX410002



**Silver**  
FU11TCXX410004



**Red**  
FU11TCXX410005

# SHIELD

## SHIELD TOP CASE L BACKREST



Multi-density foam comfort  
backrest for lid and base  
FU11TCXX420001

# SHIELD


## SHIELD TOP CASE S LUXE



reddot winner 2024

\*Color lid and backrest included



 Black/Yellow  
FU02TCUP000S16



 Black/Silver  
FU02TCUP000S14



 White/Red  
FU02TCUP000S25



Removable soft lining in base



Double density foam backrest



Premium engraved color lid

### TECH SPECS



DIM: 42 × 43.5 × 32cm

35L

VOLUME 35L



FITS 1 MODULAR HELMET



SECURITY LOCK



MAX LOAD 5KG

# SHIELD

## SHIELD TOP CASE S



reddot winner 2024

\*Color lid and backrest sold separately



 Black/Yellow  
FU02TCXX000S16



 Black/Silver  
FU02TCXX000S14



 White/Red  
FU02TCXX000S25



Removable soft lining in base



Integrated hidden hinge for smooth rear surface



Fits 1 full or modular helmet

### TECH SPECS



DIM: 42 × 43.5 × 32cm

**35L**

VOLUME 35L



FITS 1 MODULAR HELMET



SECURITY LOCK



MAX LOAD 5KG

# SHIELD

## SHIELD TOP CASE S COLOR LID



**Black**  
FU02TCXX410001



**White**  
FU02TCXX410002



**Silver**  
FU02TCXX410004



**Red**  
FU02TCXX410005

# SHIELD

## SHIELD TOP CASE S BACKREST



Multi-density foam  
comfort backrest  
FU02TCXX420001

# CASE SUPPORT

## ALUMINUM SUPPORT PLATE



### / Anodized Aluminum

FU01ALCS210000

compatible with all RANGER Top Case variants



### / Black Anodized Aluminum

FU01ALCS210001

compatible with all RANGER Top Case variants

# CASE SUPPORT

## PLASTIC SUPPORT PLATE



### / Plastic support plate S

FS063PLCSASSY0

compatible with all SHIELD Top Case S variants



### / Plastic support plate L

FS063PLCSASSY1

compatible with all SHIELD Top Case L variants  
and RANGER Top Case variants



# EVEREST

## EVEREST

Made of high frequency welded TPU with hypalon reinforcements, the EVEREST bag range is designed to withstand the most extreme weather and climate conditions.

IP66 certified, these bags offer full protection against both dust and heavy rain. With that kind of protection guaranteed, there's no limit to where you can travel.

The only question is: *How far do you dare to go?*



# EVEREST

## EVEREST SIDE BAG 34L+34L



**Carbon Black**  
FU06EVSB006801



**Slate Grey**  
FU06EVSB006803



**Arctic White**  
FU06EVSB006802



Universal fixation system



Reflective design



MOLLE system



Detachable shoulder strap

### TECH SPECS



DIM: 42 × 20 × 40cm



VOLUME 34L+34L



IP66 CERTIFIED



AIR RELEASE VALVE



MOLLE SYSTEM



PADDED LINING



REFLECTIVE DESIGN



SHOULDER STRAP



UNIVERSAL FIXATION

# EVEREST

## EVEREST DUFFEL BAG 50L



**Carbon Black**  
FU06EVDB005001



**Slate Grey**  
FU06EVDB005003



**Arctic White**  
FU06EVDB005002



Removable hypalon cover



Integrated shoulder straps



Document pocket

### TECH SPECS



DIM: 56 × 32 × 28cm



VOLUME 50L



IP66 CERTIFIED



AIR RELEASE VALVE



MOLLE SYSTEM



PADDED LINING



REFLECTIVE DESIGN



BACKPACK STRAPS



UNIVERSAL FIXATION

# EVEREST

## EVEREST ROLL BAG 36L



**Carbon Black**  
FU06EVRB003601



**Slate Grey**  
FU06EVRB003603



**Arctic White**  
FU06EVRB003602



Quick access pocket



Modular assembly



Detachable shoulder strap

### TECH SPECS



DIM: 52 × 30 × 22cm



VOLUME 36L



IP66 CERTIFIED



AIR RELEASE VALVE



MOLLE SYSTEM



QUICK ACCESS POCKET



REFLECTIVE DESIGN



SHOULDER STRAP



UNIVERSAL FIXATION

# EVEREST

## EVEREST ENGINE GUARD BAG 6L



**Carbon Black**  
FU06EVEB000601



**Slate Grey**  
FU06EVEB000603



**Arctic White**  
FU06EVEB000602



Quick access pocket



Universal fixation system



Detachable shoulder strap

### TECH SPECS



DIM: 20 × 10 × 32cm



VOLUME 6L



IP66 CERTIFIED



MOLLE SYSTEM



PADDED LINING



QUICK ACCESS POCKET



REFLECTIVE DESIGN



SHOULDER STRAP



UNIVERSAL FIXATION

# EVEREST

## EVEREST SEAT BAG 5L



Carbon Black  
FU06EVTB000501



Slate Grey  
FU06EVTB000503



Reflective design



Modular assembly



Detachable shoulder strap

### TECH SPECS



DIM: 20 × 10 × 24cm



VOLUME 5L



IP66 CERTIFIED



MOLLE SYSTEM



PADDED LINING



MODULAR ASSEMBLY



REFLECTIVE DESIGN



SHOULDER STRAP



UNIVERSAL FIXATION

# EVEREST

## EVEREST BACKPACK 26L



**Carbon Black**  
FU06EVBP002601



**Slate Grey**  
FU06EVBP002603



**Arctic White**  
FU06EVBP002602



MOLLE system



Comfort foam padding



Expandable storage panel



Removable organizer pocket



Quick access pocket

### TECH SPECS



DIM: 28 × 20 × 50cm



VOLUME 26L



IP66 CERTIFIED



AIR RELEASE VALVE



MOLLE SYSTEM



QUICK ACCESS POCKET



PADDED PC POCKET



REFLECTIVE DESIGN



UNIVERSAL FIXATION



# LEGACY

## LEGACY

The FURCHTLOS LEGACY line combines timeless style with modern convenience to create a range of bags that you can enjoy carrying with you both on and off the bike.

Made of durable vegan leather and 1000D PVC lined W/R polyester that's both abrasion resistant and water resistant, these bags are tough enough to withstand the abuses of normal riding conditions, but refined enough to carry with you into the office or take on a flight.

With a timeless design and construction that's built to last, these are the kind of bags you can enjoy for a lifetime.

# LEGACY

## LEGACY SADDLEBAG 16L/12L



**Classic Black**  
FU05LGSB001601 / FU05LGSB001201



**Vintage Grey**  
FU05LGSB001603 / FU05LGSB001203

The Legacy Saddlebag combines timeless style with modern convenience.

This bag is cleverly designed to be worn as a messenger or shoulder bag when off the bike, then easily attached as a side bag or seat bag between destinations.

Made to meet your everyday needs, the 16L bag fits a standard laptop computer, while the 12L fits a large tablet. A padded soft interior with movable dividers keeps your items protected and organized, and the rain cover ensures they always stay dry.



Universal fixation system



Detachable shoulder strap



Padded interior compartments



Rain cover included

### TECH SPECS



DIM: 40 × 12.5 × 30cm (16L)  
DIM: 34 × 12.5 × 27cm (12L)



**16L**  
VOLUME 16L / 12L



IPX5 CERTIFIED



PADDED COMPARTMENTS



MOLLE SYSTEM



QUICK ACCESS POCKET



RAIN COVER INCLUDED



SHOULDER STRAP



UNIVERSAL FIXATION



# LEGACY

## LEGACY TANK BAG 8L/5L



**Classic Black**  
FU05LGTK000801 / FU05LGTK000501



**Vintage Grey**  
FU05LGTK000803 / FU05LGTK000503

The Legacy Tank Bag is much more than its name, with 6 different functions packed into this neat little package. With the included straps, this bag can be assembled onto the bike in 4 different configurations (as magnetic tank bag, non-magnetic tank bag, side bag or seat bag), and can be worn as both a shoulder bag and a backpack.

The interior is just as flexible, with padded compartments that can be rearranged to fit your different daily belongings. With so many configurations, this bag is sure to become your daily riding companion, no matter how you choose to travel.



Universal fixation system



Detachable shoulder strap



Padded interior compartments



Rain cover included

### TECH SPECS



DIM: 30 × 22 × 12cm (8L)  
DIM: 24.5 × 19 × 12cm (5L)



VOLUME 8L / 5L



IPX5 CERTIFIED



PADDED COMPARTMENTS



MOLLE SYSTEM



QUICK ACCESS POCKET



RAIN COVER INCLUDED



SHOULDER STRAP



UNIVERSAL FIXATION

# LEGACY

## LEGACY DUFFEL BAG 32L



Classic Black  
FU05LGDB003201



Vintage Grey  
FU05LGDB003203

Providing ample style and storage space, the 32L Legacy Duffel Bag is the perfect carryall for an overnight trip or a weekend getaway. The interior is equipped with thick padded dividers to keep your belongings safe and protected, while the exterior quick pocket is a great place to store smaller items that you want to be able to easily access.

Use the straps provided to mount the 32L Duffel Bag directly to the rear of the bike, or attach it to the 46L Duffel Bag to maximize your on-bike storage space.



Quick access pocket



Modular assembly



Rain cover included

### TECH SPECS



DIM: 48 × 26 × 28cm



VOLUME 32L



IPX5 CERTIFIED



PADDED COMPARTMENTS



MOLLE SYSTEM



QUICK ACCESS POCKET



RAIN COVER INCLUDED



SHOULDER STRAP



UNIVERSAL FIXATION

# LEGACY

## LEGACY DUFFEL BAG 46L



**Classic Black**  
FU05LGDB004601



**Vintage Grey**  
FU05LGDB004603

The 46L Legacy Duffel Bag is built to provide maximum storage space for long cross-country trips or multi-day travels.

In addition to the main padded compartment, this bag is equipped with two convenient side pockets as well as additional pockets in the inside flap and the rear of the bag, so you can easily pack everything you need.

For those extra long travels, simply hook the 32L Duffel Bag on top for a combined 78L of dedicated storage.



Quick access pocket



Padded interior compartments



Rain cover included

### TECH SPECS



DIM: 55 × 30 × 28cm



VOLUME 46L



IPX5 CERTIFIED



PADDED COMPARTMENTS



MOLLE SYSTEM



QUICK ACCESS POCKET



RAIN COVER INCLUDED



SHOULDER STRAP



UNIVERSAL FIXATION

# LEGACY

## LEGACY PHONE HOLDER



FU05LGPH00X101



Integrated card slots



Assembles to Legacy Tank Bag



# LEGACY

## LEGACY ACCESSORY POUCH



FU05LGAP00X101



Fits cigarette box + lighter



Assembles to MOLLE panel



# LEGACY

## LEGACY BOTTLE HOLDER



FU05LGBH00X101



Can hold bottles up to 1L



Assembles to MOLLE panel



# LEGACY

## LEGACY SEAT BAG BASE



FU05LGUB00X101

Compatible with:



LEGACY SADDLEBAG



LEGACY TANK BAG

The Legacy Seat Bag Base allows you to take other bags from the Legacy range and quickly assemble them to the rear seat of the bike to be used as a seat bag. Simply place the base under the seat and connect the desired bag with the 4 G-hooks.

With this system, there's no need to have tie-down straps on the exterior of the bike. Not only does it allow quick and convenient mounting & demounting of the bag, but it leaves the bike with a clean finish.

When you don't have a bag assembled, simply hook the G hooks back into the base, and you won't even notice it's there.

# NOTES

---

---

---

---

---

---

---

---

---

---

# NOTES

---

---

---

---

---

---

---

---

---

---

@furchtlosmoto



[www.furchtlos-moto.com](http://www.furchtlos-moto.com)

©2024 FURCHTLOS