

FURCHTLOS

RIDE YOUR WAY

FURCHTLOS

FURCHTLOS was founded by a group of motorcycle enthusiasts with a combined 60+ years of experience in the motorcycle and auto industry who share these common beliefs:

We believe that motorcycle accessories should have the same caliber of design and engineering as the world-class bikes they're being assembled to.

We believe that kitting out your bike with accessories should feel like an upgrade and not like a compromise.

We believe that riders deserve better...better design, better functionality, and better performance.

We believe it's time for a disruption in the motorcycle accessories industry...

That's why we're pushing the limits of technology and engineering, to bring riders the high quality products that they truly desire.

RANGER

Aluminum Case Series



reddot winner 2023
vehicle accessories design

Top Case 43L 10



Aero Aluminum / Anthracite / Cool White

Top Case 50L 12



Aero Aluminum / Anthracite / Cool White

Top Case 50L ADV 20

CARBON LID



Aero Aluminum / Anthracite / Cool White

Side Case 36L Left 14



Aero Aluminum / Anthracite / Cool White

Side Case 36L Right 15



Aero Aluminum / Anthracite / Cool White

Side Case 31L Left 16



Aero Aluminum / Anthracite / Cool White

Side Case 31L Right 17



Aero Aluminum / Anthracite / Cool White

Side Case 36L Left ADV 22

CARBON LID



Aero Aluminum / Anthracite / Cool White

Side Case 36L Right ADV 23

CARBON LID



Aero Aluminum / Anthracite / Cool White

Side Case 31L Left ADV 24

CARBON LID



Aero Aluminum / Anthracite / Cool White

Side Case 31L Right ADV 25

CARBON LID



Aero Aluminum / Anthracite / Cool White

Top Case 50L Inner Bag 28



Top Case 50L Inner Bag

Side Case 36L/31L Inner Bag 30



Side Case 36L Inner Bag



Side Case 31L Inner Bag

Aluminum Support Plate 46



Anodized Aluminum



Black Anodized Aluminum

SHIELD

Plastic Case Series



reddot winner 2024
vehicle accessories design

Top Case L Luxe 34



Black/Yellow



Black/Red



Black/Silver



White/Red



White/Silver

Top Case L Accessories 38



Color Lid L



Backrest L

Top Case L 36



Black/Yellow



Black/Red



Black/Silver



White/Red



White/Silver

Top Case S Accessories 44



Color Lid S



Backrest S

Top Case S Luxe 40



Black/Yellow



Black/Red



Black/Silver



White/Red



White/Silver

Support Plates 47



Plastic Support Plate L



Plastic Support Plate S

Top Case S 42



Black/Yellow



Black/Red



Black/Silver



White/Red



White/Silver

EVEREST

Waterproof Bag Series

Side Bag 34L/20L

50



Carbon Black / Slate Grey / Arctic White



Carbon Black / Slate Grey / Arctic White

Duffel Bag 50L

52



Carbon Black / Slate Grey / Arctic White

Roll Bag 36L

54



Carbon Black / Slate Grey / Arctic White

Engine Guard Bag 6L

56



Carbon Black / Slate Grey / Arctic White

Seat Bag 5L

58



Carbon Black / Slate Grey / Arctic White

Backpack 26L

60



Carbon Black / Slate Grey / Arctic White

Fast Fit Mechanism

64



Side Frame Variant / Alu Plate Variant / Plastic Plate Variant

LEGACY

Retro Bag Series

Saddlebag 16L/12L

70



Classic Black / Vintage Grey / Rustic Brown

Tank Bag 8L/5L

72



Classic Black / Vintage Grey / Rustic Brown

Duffel Bag 17L

74



Classic Black / Vintage Grey / Rustic Brown

Duffel Bag 32L

76



Classic Black / Vintage Grey / Rustic Brown

Duffel Bag 46L

78



Classic Black / Vintage Grey / Rustic Brown

Phone Holder

80



Classic Black / Rustic Brown

Accessory Pouch

81



Classic Black / Rustic Brown

Bottle Holder

82



Classic Black / Rustic Brown

Seat Bag Base

83



Classic Black



EUROPEAN
PRODUCT
DESIGN
AWARD™



red**dot** winner 2023
vehicle accessories design

RANGER

European Product Design Winner 2024 and Red Dot Winner 2023, the FURCHTLOS RANGER aluminum cases take advantage of cutting-edge hybrid case technology combining aircraft-grade aluminum with high strength polymers to offer superior lightweight performance in a sleek, rivetless structure.

With technical features such as a high security lock, robust self-blocking hinge, double limit strips, watertight sealing system, and a self-insulated structure that dampens noise and vibrations, the RANGER cases set a whole new standard for functionality, so you can enjoy the ultimate riding experience.

RANGER

RANGER TOP CASE 43L

NEW!



Aero Aluminum
FU01TCXX004300



Anthracite
FU01TCXX004301



Cool White
FU01TCXX004302



Thermoformed inner lining



Integrated comfort backrest



High strength plastic handles

TECH SPECS



DIM: 43 × 38 × 33cm



VOLUME 43L



FITS 1 MODULAR HELMET



INTEGRATED BACKREST X2



SECURITY LOCK



MAX LOAD 10KG

RANGER

RANGER TOP CASE 50L



reddot winner 2023



Aero Aluminum
FU01TCXX005000



Anthracite
FU01TCXX005001



Cool White
FU01TCXX005002



Double limit strips & reinforced hinge



Integrated backrest X2



Cast aluminum handles

TECH SPECS



DIM: 45 × 40 × 34cm



VOLUME 50L



FITS 1 MODULAR HELMET



CAST ALUMINUM HANDLES



INTEGRATED BACKREST X2



SECURITY LOCK



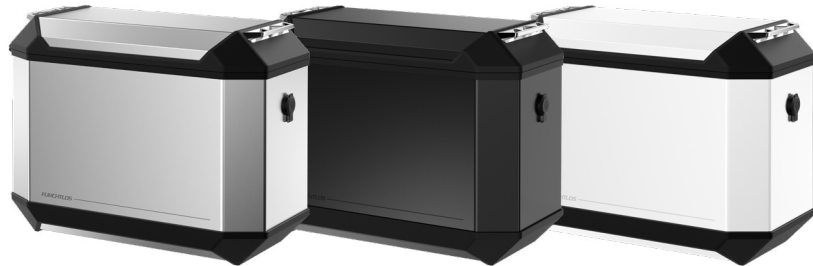
MAX LOAD 10KG

RANGER

RANGER SIDE CASE 36L LEFT



reddot winner 2023



Aero Aluminum
FU01SCCL003600

Anthracite
FU01SCCL003601

Cool White
FU01SCCL003602

TECH SPECS



DIM: 49.5 × 23 × 36.5cm



VOLUME 36L



CAST ALUMINUM HANDLES



SECURITY LOCK



MAX LOAD 10KG

RANGER

RANGER SIDE CASE 36L RIGHT



reddot winner 2023



Aero Aluminum
FU01SCCR003600

Anthracite
FU01SCCR003601

Cool White
FU01SCCR003602

TECH SPECS



DIM: 49.5 × 23 × 36.5cm



VOLUME 36L



CAST ALUMINUM HANDLES



SECURITY LOCK



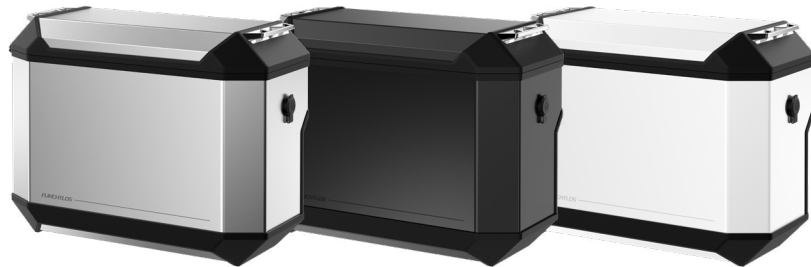
MAX LOAD 10KG

RANGER

RANGER SIDE CASE 31L LEFT



reddot winner 2023



Aero Aluminum
FU01SCTL003100

Anthracite
FU01SCTL003101

Cool White
FU01SCTL003102

TECH SPECS



DIM: 49.5 × 23 × 36.5cm



31L
VOLUME 31L



CAST ALUMINUM HANDLES



SECURITY LOCK



MAX LOAD 10KG

RANGER

RANGER SIDE CASE 31L RIGHT



reddot winner 2023



Aero Aluminum
FU01SCTR003100

Anthracite
FU01SCTR003101

Cool White
FU01SCTR003102

TECH SPECS



DIM: 49.5 × 23 × 36.5cm



31L
VOLUME 31L



CAST ALUMINUM HANDLES



SECURITY LOCK



MAX LOAD 10KG



EUROPEAN
PRODUCT
DESIGN
AWARD™



red**dot** winner 2023
vehicle accessories design

RANGER ADV

For extreme riders who want maximum functionality and performance from their luggage system, the RANGER ADV line has all the same technical features of the RANGER cases, but with some additional enhancements that are geared toward adventure enthusiasts.

The traditional aluminum lid is replaced by a chopped carbon version for enhanced lightweight performance, tie-down strips provide additional points for mounting objects to the top of the case, and 3M reflective details ensure high visibility to others, no matter the lighting conditions.

With RANGER ADV, you're ready to bring your adventure to the extreme.

RANGER

RANGER TOP CASE 50L ADV



reddot winner 2023



Aero Aluminum
FU08TCXX005000



Anthracite
FU08TCXX005001



Cool White
FU08TCXX005002



Real chopped carbon fiber lid



Cast aluminum handles



High strength hypalon strips

TECH SPECS



DIM: 45 × 40 × 34cm



VOLUME 50L



FITS 1 MODULAR HELMET



CAST ALUMINUM HANDLES



INTEGRATED BACKREST X2



SECURITY LOCK



MAX LOAD 10KG

RANGER

RANGER SIDE CASE 36L LEFT ADV



reddot winner 2023



Aero Aluminum
FU08SCCL003600

Anthracite
FU08SCCL003601

Cool White
FU08SCCL003602

TECH SPECS



DIM: 49.5 × 23 × 36.5cm



VOLUME 36L



CAST ALUMINUM HANDLES



SECURITY LOCK



MAX LOAD 10KG

RANGER

RANGER SIDE CASE 36L RIGHT ADV



reddot winner 2023



Aero Aluminum
FU08SCCR003600

Anthracite
FU08SCCR003601

Cool White
FU08SCCR003602

TECH SPECS



DIM: 49.5 × 23 × 36.5cm



VOLUME 36L



CAST ALUMINUM HANDLES



SECURITY LOCK



MAX LOAD 10KG

RANGER

RANGER SIDE CASE 31L LEFT ADV



reddot winner 2023



Aero Aluminum
FU08SCTL003100

Anthracite
FU08SCTL003101

Cool White
FU08SCTL003102

TECH SPECS



DIM: 49.5 × 23 × 36.5cm



VOLUME 31L



CAST ALUMINUM HANDLES



SECURITY LOCK



MAX LOAD 10KG

RANGER

RANGER SIDE CASE 31L RIGHT ADV



reddot winner 2023



Aero Aluminum
FU08SCTR003100

Anthracite
FU08SCTR003101

Cool White
FU08SCTR003102

TECH SPECS



DIM: 49.5 × 23 × 36.5cm



VOLUME 31L



CAST ALUMINUM HANDLES



SECURITY LOCK



MAX LOAD 10KG



RANGER

RANGER INNER BAGS

With 4 great functions packed into 1, the RANGER Inner Bags bring a whole new level of versatility to your aluminum case storage system.

Snap the bag to the inside of your RANGER case to use it as an inner lining and have easy access to your items while traveling.

Roll the bag closed when you want to have IPX6 waterproof protection.

Use the fixation straps included to secure the bag to the top of the case or the rear of the motorcycle when you need additional storage capacity.

Then use the shoulder strap to carry your belongings with you once you reach your destination.

RANGER

RANGER TOP CASE 50L INNER BAG



Top Case 50L Inner Bag
FU07TCIB005000



Extra cargo function



Inner lining function



IPX6 waterproof inner bag function

TECH SPECS



DIM: 38 × 32 × 32cm



IPX6 WATERPROOF



REFLECTIVE DESIGN



SHOULDER STRAP



CAN BE USED AS SEAT BAG

RANGER

RANGER SIDE CASE 36L/31L INNER BAG



Side Case 36L Inner Bag
FU07SCIB003600



Side Case 31L Inner Bag
FU07SCIB003100



Extra cargo function



Inner lining function



IPX6 waterproof inner bag function

TECH SPECS



DIM: 40 × 22 × 34cm



IPX6 WATERPROOF



REFLECTIVE DESIGN



SHOULDER STRAP



CAN BE USED AS SEAT BAG



reddot winner 2024
vehicle accessories design

SHIELD

Red Dot Winner 2024 in Vehicle Accessories Design, the FURCHTLOS SHIELD line brings together high strength materials and advanced manufacturing technologies to offer the highest level of protection for your belongings without influencing the weight of your bike.

Beneath its sleek exterior shell, SHIELD contains a number of advanced engineering features that work to optimize both performance and appearance. The patented high security lock and fixation mechanisms have been meticulously integrated into the case structure to optimize internal storage capacity and achieve a clean "buttonless" exterior appearance. Hidden hinges and soft-touch comfort backrests maximize comfort for the rear passenger. And high-end finishings like two-tone parametric engravings give the product a luxury feeling.

With many different color choices and optional accessories such as comfort backrests and color lids, the SHIELD cases can be personalized to fit any riding style.

SHIELD

SHIELD TOP CASE L LUXE

*Color lid and backrest included



reddot winner 2024



Black / Yellow FU11TCUP000L16



Black / Red FU11TCUP000L15



Black / Silver FU11TCUP000L14



White / Red FU11TCUP000L25



White / Silver FU11TCUP000L24



Removable soft lining in base and lid



Multi-density foam backrest X2



Premium engraved color lid

TECH SPECS



BACKREST X2



DIM: 60 × 48 × 32cm



48L

VOLUME 48L



FITS 2 FULL HELMETS



SECURITY LOCK



MAX LOAD 10KG

SHIELD

SHIELD TOP CASE L

*Color lid and backrest sold separately



reddot winner 2024



Black / Yellow FU11TCXX000L16



Black / Red FU11TCXX000L15



Black / Silver FU11TCXX000L14



White / Red FU11TCXX000L25



White / Silver FU11TCXX000L24



Removable soft lining in base



Integrated hidden hinge



Fits 2 full helmets

TECH SPECS



DIM: 60 × 48 × 32cm



VOLUME 48L



FITS 2 FULL HELMETS



SECURITY LOCK



MAX LOAD 10KG

SHIELD

SHIELD TOP CASE L COLOR LID



Black FU11TCXX410001



White FU11TCXX410002



Silver FU11TCXX410004



Red FU11TCXX410005

SHIELD

SHIELD TOP CASE L BACKREST



Multi-density foam comfort
backrest for lid and base
FU11TCXX420001

SHIELD

SHIELD TOP CASE S LUXE

*Color lid and backrest included



reddot winner 2024



Black / Yellow FU02TCUP000S16



Black / Red FU02TCUP000S15



Black / Silver FU02TCUP000S14



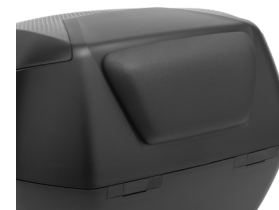
White / Red FU02TCUP000S25



White / Silver FU02TCUP000S24



Removable soft lining in base



Multi-density foam backrest



Premium engraved color lid

TECH SPECS



BACKREST



DIM: 42 × 43.5 × 32cm



35L

VOLUME 35L



FITS 1 MODULAR HELMET



SECURITY LOCK



MAX LOAD 5KG

SHIELD

SHIELD TOP CASE S

*Color lid and backrest sold separately



Black / Yellow FU02TCXX000S16



reddot winner 2024



Black / Red FU02TCXX000S15



Black / Silver FU02TCXX000S14



White / Red FU02TCXX000S25



White / Silver FU02TCXX000S24



Removable soft lining in base



Integrated hidden hinge



Fits 1 full or modular helmet

TECH SPECS



DIM: 42 × 43.5 × 32cm

35L

VOLUME 35L



FITS 1 MODULAR HELMET



SECURITY LOCK



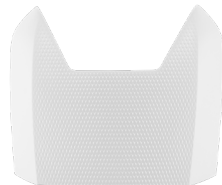
MAX LOAD 5KG

SHIELD

SHIELD TOP CASE S COLOR LID



 Black FU02TCXX410001



 White FU02TCXX410002



 Silver FU02TCXX410004



 Red FU02TCXX410005

SHIELD

SHIELD TOP CASE S BACKREST



Multi-density foam
comfort backrest
FU02TCXX420001

CASE SUPPORT

ALUMINUM SUPPORT PLATE



/ Anodized Aluminum

FU01ALCS210000

compatible with all RANGER 50L Top Case variants



/ Black Anodized Aluminum

FU01ALCS210001

compatible with all RANGER 50L Top Case variants

CASE SUPPORT

PLASTIC SUPPORT PLATE



/ Plastic Support Plate S

FS063PLCSASSY0

compatible with all SHIELD Top Case S variants



/ Plastic Support Plate L

FS063PLCSASSY1

compatible with all SHIELD Top Case L variants
and RANGER Top Case variants



EVEREST

Made of high frequency welded PVC with hypalon reinforcements, the EVEREST bag range is designed to withstand the most extreme weather and climate conditions.

IP66 certified, these bags offer full protection against both dust and heavy rain. With that kind of protection guaranteed, there's no limit to where you can travel.

The only question is: *How far do you dare to go?*

EVEREST

EVEREST SIDE BAG 34L/20L



Carbon Black
FU06EVS006801 / FU06EVS004001



Slate Grey
FU06EVS006803 / FU06EVS004003



Arctic White
FU06EVS006802 / FU06EVS004002



Universal fixation system



Reflective design



MOLLE system



Detachable shoulder strap

TECH SPECS



DIM: 42 × 20 × 40cm (34L)
DIM: 36 × 16 × 35cm (20L)



VOLUME 34L/20L



IP66 CERTIFIED



AIR RELEASE VALVE



MOLLE SYSTEM



PADDED LINING



REFLECTIVE DESIGN



SHOULDER STRAP



UNIVERSAL FIXATION

EVEREST

EVEREST DUFFEL BAG 50L



Carbon Black
FU06EVDB005001



Slate Grey
FU06EVDB005003



Arctic White
FU06EVDB005002



Removable hypalon cover

Integrated shoulder straps

Document pocket

TECH SPECS



DIM: 56 × 32 × 28cm



VOLUME 50L



IP66 CERTIFIED



AIR RELEASE VALVE



MOLLE SYSTEM



PADDED LINING



REFLECTIVE DESIGN



BACKPACK STRAPS



UNIVERSAL FIXATION

EVEREST

EVEREST ROLL BAG 36L



Carbon Black
FU06EVRB003601



Slate Grey
FU06EVRB003603



Arctic White
FU06EVRB003602



Quick access pocket

Modular assembly

Detachable shoulder strap

TECH SPECS



DIM: 52 × 30 × 22cm



VOLUME 36L



IP66 CERTIFIED



AIR RELEASE VALVE



MOLLE SYSTEM



QUICK ACCESS POCKET



REFLECTIVE DESIGN



SHOULDER STRAP



UNIVERSAL FIXATION

EVEREST

EVEREST ENGINE GUARD BAG 6L



Carbon Black
FU06EVEB000601



Slate Grey
FU06EVEB000603



Arctic White
FU06EVEB000602



Quick access pocket



Universal fixation system



Detachable shoulder strap

TECH SPECS



DIM: 20 × 10 × 32cm



VOLUME 6L



IP66 CERTIFIED



MOLLE SYSTEM



PADDED LINING



QUICK ACCESS POCKET



REFLECTIVE DESIGN



SHOULDER STRAP



UNIVERSAL FIXATION

EVEREST

EVEREST SEAT BAG 5L



Carbon Black
FU06EVTB000501



Slate Grey
FU06EVTB000503



Arctic White
FU06EVTB000502



Reflective design



Modular assembly



Detachable shoulder strap

TECH SPECS



DIM: 20 × 10 × 24cm



VOLUME 5L



IP66 CERTIFIED



MOLLE SYSTEM



PADDED LINING



MODULAR ASSEMBLY



REFLECTIVE DESIGN



SHOULDER STRAP



UNIVERSAL FIXATION

EVEREST

EVEREST BACKPACK 26L



Carbon Black
FU06EVB002601



Slate Grey
FU06EVB002603



Arctic White
FU06EVB002602



MOLLE system



Comfort foam padding



Expandable storage panel



Removable organizer pocket



Quick access pocket

TECH SPECS



DIM: 28 × 20 × 50cm



VOLUME 26L



IP66 CERTIFIED



AIR RELEASE VALVE



MOLLE SYSTEM



QUICK ACCESS POCKET



PADDED PC POCKET



REFLECTIVE DESIGN



UNIVERSAL FIXATION



FAST FIT FURCHTLOS

The FURCHTLOS Fast Fit mechanism is a first-of-its-kind removable mechanism system that allows the EVEREST Side Bag and EVEREST Roll Bag to be instantly converted into quick-release soft luggage products.

Weighing less than 1kg per side and with a slim profile that's hidden within the body of the bag, the Fast Fit mechanism is the only soft luggage quick-release system on the market that doesn't require screws or tedious straps for the mechanism attachment. There's no perforation of the outer fabric layer, no need for an inner dry bag, and no clunky hardware that hits you in the leg as you carry the bag away from the bike.

The EVEREST + Fast Fit configuration is everything you've wanted in a soft luggage system – it's lightweight, comfortable to carry, IP66 waterproof and dustproof, quick-drying, easy to clean, lockable to the bike, and it attaches and releases in a matter of seconds.

Once again, the EVEREST range pushes performance to the extreme, so you can go further.

FAST FIT

FAST FIT MECHANISM

NEW!



Side Frame Variant

FU12MECHFUSLX2

compatible with Furchtlos side frames



Aluminum Plate Variant

FU12MECHALCSX1

compatible with Furchtlos Alu Support Plates



Plastic Plate Variant

FU12MECHPLCSX1

compatible with Plastic Support Plate S and L

FAST FIT MECHANISM ASSEMBLY



Undo the velcro to access the back pocket



Slide the mechanism plate into the pocket



Resecure the velcro to ensure a tight fit

REMOVAL FROM MOTORCYCLE



Open the flap to reveal the lock cylinder



Turn the key 90 degrees and press the button



Lift the bag away from the bike

FAST FIT

FAST FIT MECHANISM

Tail Bag Application



EVEREST Roll Bag
+
Alu Plate FAST FIT Mechanism



FAST FIT

FAST FIT MECHANISM

Side Bag Application



EVEREST Side Bag
+
Side Frame FAST FIT Mechanism





LEGACY

The FURCHTLOS LEGACY line combines timeless style with modern convenience to create a range of bags that you can enjoy carrying with you both on and off the bike.

Made of durable vegan leather and 1000D PVC lined W/R polyester that's both abrasion resistant and water resistant, these bags are tough enough to withstand the abuses of normal riding conditions, but refined enough to carry with you into the office or take on a flight.

With a timeless design and construction that's built to last, these are the kind of bags you can enjoy for a lifetime.

LEGACY

LEGACY SADDLEBAG 16L/12L



Classic Black
FU05LGSB001601 / FU05LGSB001201



Vintage Grey
FU05LGSB001603 / FU05LGSB001203



Rustic Brown
FU05LGSB001612 / FU05LGSB001212



Universal fixation system



Magnetic security buckles



Padded interior compartments



Rain cover included

TECH SPECS



DIM: 40 × 12.5 × 30cm (16L)
DIM: 34 × 12.5 × 27cm (12L)



VOLUME 16L / 12L



IPX5 CERTIFIED



PADDED COMPARTMENTS



MOLLE SYSTEM



QUICK ACCESS POCKET



RAIN COVER INCLUDED



SHOULDER STRAP



UNIVERSAL FIXATION

LEGACY

LEGACY TANK BAG 08L/05L



Classic Black

FU05LGTK000801 / FU05LGTK000501



Vintage Grey

FU05LGTK000803 / FU05LGTK000503



Rustic Brown

FU05LGTK000812 / FU05LGTK000512



Universal fixation system



Detachable shoulder strap



Padded interior compartments



Rain cover included

TECH SPECS



DIM: 30 × 22 × 12cm (8L)
DIM: 24.5 × 19 × 12cm (5L)

8L/5L

VOLUME 8L / 5L



IPX5 CERTIFIED



PADDED COMPARTMENTS



MOLLE SYSTEM



QUICK ACCESS POCKET



RAIN COVER INCLUDED



SHOULDER STRAP



UNIVERSAL FIXATION

LEGACY

LEGACY DUFFEL BAG 17L



Classic Black
FU05LGDB001701



Vintage Grey
FU05LGDB001703



Rustic Brown
FU05LGDB001712



Detachable shoulder strap



Modular assembly



Rain cover included

TECH SPECS



DIM: 34 × 25 × 20cm



VOLUME 17L



IPX5 CERTIFIED



PADDED COMPARTMENTS



MOLLE SYSTEM



QUICK ACCESS POCKET



RAIN COVER INCLUDED



SHOULDER STRAP



UNIVERSAL FIXATION

LEGACY

LEGACY DUFFEL BAG 32L



Classic Black
FU05LGDB003201



Vintage Grey
FU05LGDB003203



Rustic Brown
FU05LGDB003212



Quick access pocket



Modular assembly



Rain cover included

TECH SPECS



DIM: 48 × 26 × 28cm



VOLUME 32L



IPX5 CERTIFIED



PADDED COMPARTMENTS



MOLLE SYSTEM



QUICK ACCESS POCKET



RAIN COVER INCLUDED



SHOULDER STRAP



UNIVERSAL FIXATION

LEGACY

LEGACY DUFFEL BAG 46L



Classic Black
FU05LGDB004601



Vintage Grey
FU05LGDB004603



Rustic Brown
FU05LGDB004612



Quick access pocket



Padded interior compartments



Rain cover included

TECH SPECS



DIM: 55 × 30 × 28cm



VOLUME 46L



IPX5 CERTIFIED



PADDED COMPARTMENTS



MOLLE SYSTEM



QUICK ACCESS POCKET



RAIN COVER INCLUDED



SHOULDER STRAP



UNIVERSAL FIXATION

LEGACY

LEGACY PHONE HOLDER



Classic Black
FU05LGPH00X101

Rustic Brown
FU05LGPH00X112



Integrated card slots



Assembles to
Legacy Tank Bag 8L/5L



LEGACY

LEGACY ACCESSORY POUCH



Classic Black
FU05LGAP00X101

Rustic Brown
FU05LGAP00X112



Fits cigarette box + lighter



Assembles to 3" MOLLE panel



LEGACY

LEGACY BOTTLE HOLDER



Classic Black
FU05LGBH00X101



Can hold bottles up to 1L



Assembles to 5" MOLLE panel



LEGACY

LEGACY SEAT BAG BASE



Classic Black
FU05LGUB00X101

Compatible with:



LEGACY Tank Bag 8L / 5L



LEGACY Saddlebag 16L / 12L



@furchtlosmoto



www.furchtlos-moto.com

©2025 FURCHTLOS