

# RANGER

## RANGER SIDE CASE 36L/31L

### USER MANUAL



FURCHTLOS

# SIDE CASE VARIANTS

This instruction manual applies to all variants of the RANGER Side Case.



Aero Aluminum

31L/36L and L/R options available



Anthracite

31L/36L and L/R options available



Cool White

31L/36L and L/R options available



Aero Aluminum ADV

31L/36L and L/R options available



Anthracite ADV

31L/36L and L/R options available



Cool White ADV

31L/36L and L/R options available

# INCLUDED ACCESSORIES

The following components are required for the assembly of the key cylinder:

Included with the case



x1

Mechanism Lever



x1

Mechanism Cover

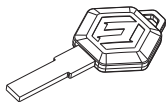
Included with the key cylinder  
(sold separately)

\* Qty per case



x1\*

Key cylinder



x2

Spare key

x1\*

Washer

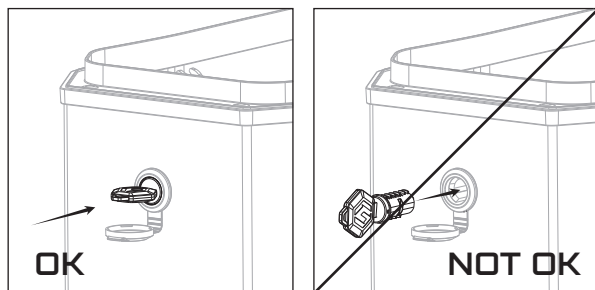
x1\*

Screw

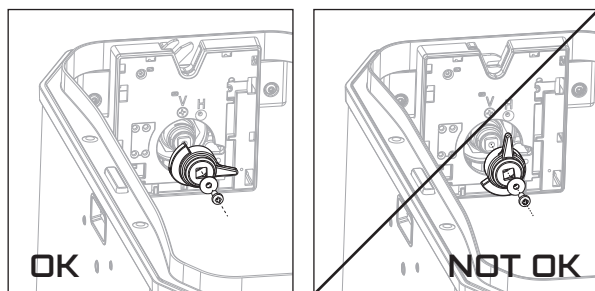
# INSTALLING THE LOCK CYLINDER

**⚠ WARNING!** It's important to follow the instructions carefully and check that the lock mechanism functions properly before closing the lid of the case! If the lock mechanism is not properly installed and the case is closed, then it cannot be opened again!

- 1** Holding the key in a horizontal position, insert the lock cylinder into the front of the case, as shown in the image below.

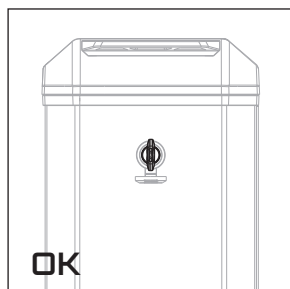


- 2** On the inside of the case, place the lever in a horizontal position on the reverse side of the key cylinder, then attach it with the washer and screw as shown in the image. While tightening the screw, use your other hand to push the key inwards towards the case to ensure a tight fit.

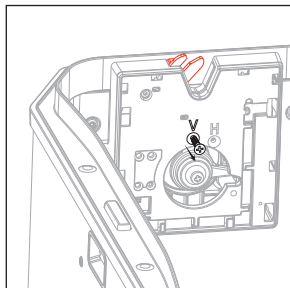


**⚠ CHECKPOINT:** Check that the key cannot be removed from the lock cylinder in the horizontal position. If the key can be removed, then the lock cylinder was installed in the incorrect position. Repeat steps 1-2 to ensure the cylinder is correctly installed and the key cannot be removed from the case when in the horizontal position. If the check is OK, continue to the next step.

- 3** Rotate the key clockwise until it stops (the key should be in a vertical position).



- 4** Remove the screw from the hole labeled V.

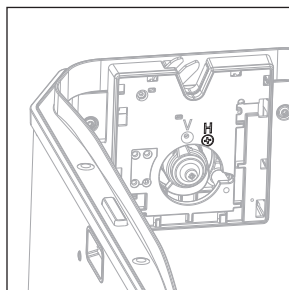
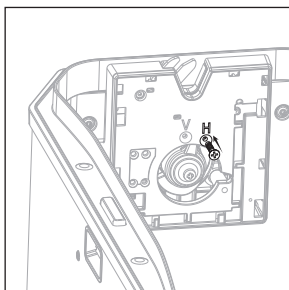
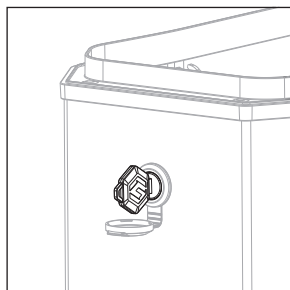


**! CHECKPOINT:**

To check that the lock mechanism is functioning correctly, push down the metal hook (outlined in red in the image) to engage the lock. Then rotate the key clockwise to check that it unlocks. If the mechanism does not lock and unlock correctly, repeat steps 2-4 until it functions correctly.

If the check is OK, continue to the next step.

- 5** With the key in the vertical position, take the screw that was removed from hole V in Step 4 and place it in hole H. Tighten the screw.

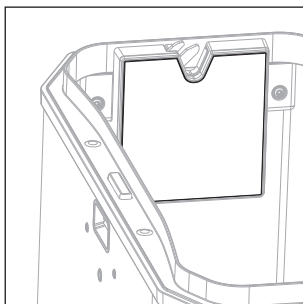
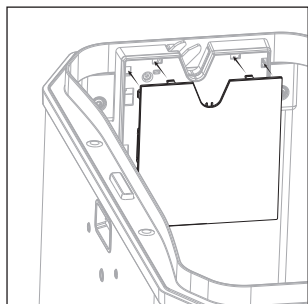


**! CHECKPOINT:**

Push down the metal hook to engage the lock, then rotate the key clockwise to check that it unlocks correctly. If the mechanism does not unlock, remove the screw and repeat step 5 ensuring the key is in the vertical position when the screw is inserted in hole H.

If the check is OK, continue to the next step.

- 6** If the lock mechanism is functioning properly, attach the mechanism cover by placing it in position and pushing to engage the clips.



## OPENING AND CLOSING THE CASE

- 1** To open the case, turn the key slightly clockwise. The lid will pop up slightly when the case is unlocked. Once the case is unlocked, use your hand to lift the lid fully open.



- 2** To close the case, press down on the lid until the lock engages.



### WARNING!

Please be aware that the case will automatically lock when fully closed.

**Pay attention not to close the keys inside the case!**

# MOUNTING THE RANGER SIDE CASE

- 1 Hold the side case at an angle and position the legs on either side of the stopper on the side frame.



- 2 Once the legs are positioned correctly on the side frame, push the top of the case towards the motorcycle to engage the wedge. Check that the side case is securely attached and cannot move freely.



# REMOVING THE RANGER SIDE CASE

- 1 Unlock the case and open the lid. Press the button inside the case to disengage the lock. The case can then be easily lifted away from the bike.

**Important!** Be sure to support the case with your other hand while disengaging the lock to prevent it from falling to the ground!



# WARNINGS AND GUIDELINES

## WARNING!

Please read the user manual carefully and follow the recommended assembly and care instructions.

It's recommended to check that the case is securely attached before each operation of the motorcycle.

Never drive the motorcycle with a case that is overloaded, that is not fully closed, that is not properly secured, or with damage that may affect the safe operation of the vehicle.

Please be mindful of how you pack your luggage. Cases should not be used to store flammable or explosive items or fragile items that can be easily broken.

## CLEANING & MAINTENANCE

The cases should only be cleaned with water and a mild soap and dried with a soft cloth.

For natural aluminum cases, it's recommended to apply a silicone lubricant spray with a dry, soft cloth after the case is dry. The regular application of silicone lubricant spray helps to maintain a protective layer on the outside of the case and prevent permanent damage by harsh agents. This process can also be used to remove stains or marks which may appear after use.

**Note: The silicone lubricant spray should only be used on natural Aero Aluminum cases. For cases in Anthracite, Cool White and other non-aluminum colors, the silicone lubricant spray does not need to be applied.**

Do not use car wash detergents or other harsh cleaning agents or chemicals.

Do not use a pressure washer.

When the surface material is exposed to direct sunlight for a long time or is affected by environmental factors (such as haze, acid rain, etc.), the color may fade or change.

If the product is contaminated with gasoline or similar substances it must be cleaned immediately!

FURCHTLOS does not assume any responsibility for product damage and color change caused by improper cleaning and maintenance!



CLEAN WITH A DAMP CLOTH OR  
SOFT SPONGE



DO NOT PRESSURE WASH



CLEAN GASOLINE OR OTHER  
SPILLS IMMEDIATELY!



DO NOT USE CHEMICALS OR HARSH  
CLEANING AGENTS



VIDEO TUTORIAL



WARRANTY REGISTRATION



FOLLOW & TAG US  
@FURCHTLOSMOTO

[www.furchtlos-moto.com](http://www.furchtlos-moto.com)